

SPRAY CHARACTERISTICS

- Uniform distribution of droplets in a solid cone spray pattern.
- Droplet size is larger than in hollow cone nozzles of equal capacity.
- Impact of spray is generally lower than narrower spray angles, assuming the same flow rate. Pressure increases affect spray angle.

CONSTRUCTION AND MATERIALS

- One piece body design with cross-milled core pressed into place which is removable.
- Core imparts the necessary swirl to produce a solid cone spray pattern.
- Hexagon body for easy installation, eliminates distortion of orifice during installation.
- Brass and 303 Stainless Steel are standard.
- Other materials available to special order.

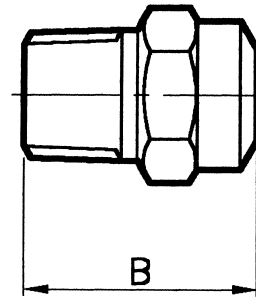
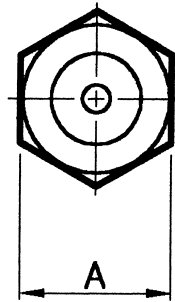
ORDER EXAMPLE

3/8" CUM 22 Brass.



DIMENSIONS AND WEIGHTS

Thread Size	Dimensions (mm)		Weight (g)
	A Hex	B	
1/4"	14,3	24,5	23
3/8"	17,5	25,5	28



CUM

CAPACITY CHART

Maximum Recommended Pressure: 35 Bar.G.

NOZZLE NUMBER	APPROX. ORIFICE DIA. (mm)	NPT THREAD SIZES		FLOW RATE IN LITRES/MIN AT Bar.G.						SPRAY ANGLES AT 0,7 Bar.G.
		1/4	3/8	0,35	0,7	1,5	3	5	7	
CUM 6,5	2,25			1,79	2,48	3,56	5,14	6,13	7,25	45°
CUM 7,5	2,5			2,02	2,86	4,35	5,93	7,57	9,16	70°
CUM 9,5	2,7			2,63	3,63	5,14	7,11	9,02	10,69	45°
CUM 10	2,8			2,78	3,82	5,53	7,50	9,74	11,45	60°
CUM 15	3,5			4,20	5,72	8,30	11,45	14,42	16,79	65°
CUM 22	4,6			6,10	8,40	11,85	16,60	20,92	24,42	80°

SOLID CONE SPRAY

TYPE CU

Contact our Helpline for any special requirements:
Tel: +44 (0) 151 424 6821
Fax: +44 (0) 151 495 1043
e-mail: sales@delavan.co.uk
Web: www.delavan.co.uk

