

SPRAY CHARACTERISTICS

- Hollow cone spray pattern with relatively large droplets at lower pressures.
- As pressure increases, the atomisation becomes finer.

CONSTRUCTION AND MATERIALS

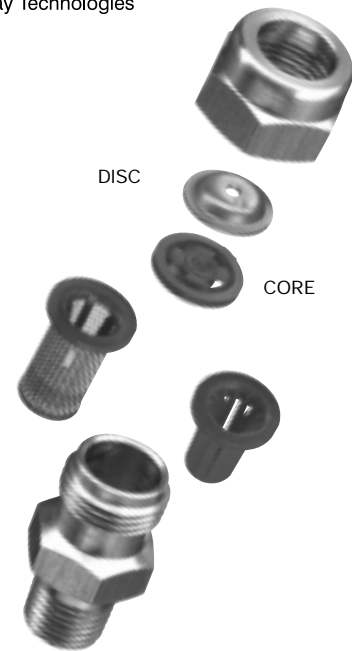
- Made up of five parts and available in these materials:
- Body - Brass and 316 Stainless Steel.
- Flanged Strainer - Brass, 316 Stainless Steel and Nylon.
- Core - Nylon only (5 different sizes).
- Disc - 302 Stainless Steel (12 different sizes).
- Cap - Brass and 316 Stainless Steel.
- Body thread sizes are Male BSPT and Female BSPP.

ORDER EXAMPLE

1/4" DCF (Female) 7-25 Brass.

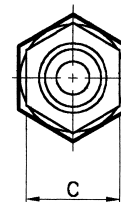
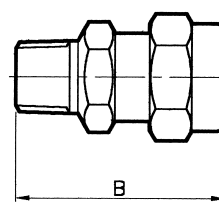
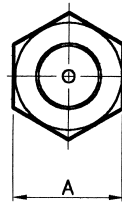
1/8" DCM (Male) 6-23 Stainless Steel.

No. 8 Disc, No. 45 Core (can be ordered separately).



DIMENSIONS AND WEIGHTS

Assembly Type	Dimensions (mm)			Weight (g)
	A Hex	B	C Hex	
1/8 DCF	20,8	40,0	18,0	65
1/8 DCM	20,8	38,4	18,0	55
1/4 DCF	20,8	40,0	18,0	64
1/4 DCM	20,8	40,0	18,0	55



DCM (MALE) ASSEMBLY

Maximum Recommended Pressure: 35 Bar.G.

CAPACITY CHART

NOZZLE NUMBER TYPE	DISC-CORE	FLOW RATE IN LITRES/MIN AT Bar.G.						SPRAY ANGLE (°) AT 2,8 Bar.G.
		2,8	5	7	10	15	25	
DC	2-13	0,31	0,41	0,48	0,58	0,71	0,91	70
DC	3-13	0,34	0,46	0,54	0,65	0,79	1,03	70
DC	2-23	0,38	0,51	0,60	0,72	0,88	1,14	65
DC	3-23	0,46	0,61	0,72	0,86	1,06	1,37	70
DC	4-13	0,46	0,61	0,72	0,86	1,06	1,37	80
DC	2-25	0,61	0,82	0,96	1,15	1,41	1,82	50
DC	5-23	0,69	0,92	1,09	1,30	1,59	2,05	90
DC	3-25	0,72	0,97	1,15	1,37	1,68	2,17	65
DC	6-23	0,80	1,07	1,27	1,51	1,85	2,39	95
DC	3-45	0,88	1,17	1,39	1,66	2,03	2,62	60
DC	4-25	1,11	1,48	1,75	2,09	2,56	3,30	75
DC	3-46	1,22	1,63	1,93	2,30	2,82	3,65	20
DC	5-25	1,33	1,78	2,11	2,52	3,09	3,99	80
DC	6-25	1,68	2,24	2,65	3,17	3,88	5,01	85
DC	5-45	1,72	2,29	2,71	3,24	3,97	5,13	75
DC	7-25	1,98	2,65	3,14	3,75	4,59	5,93	90
DC	6-45	2,21	2,96	3,50	4,18	5,12	6,61	80
DC	8-25	2,33	3,11	3,68	4,40	5,38	6,95	95
DC	7-45	2,59	3,47	4,10	4,90	6,00	7,75	85
DC	5-46	2,94	3,92	4,64	5,55	6,80	8,77	40
DC	8-45	3,05	4,28	5,07	6,05	7,41	9,57	90
DC	12-25	3,55	4,74	5,61	6,70	8,21	10,6	110
DC	14-25	3,81	5,10	6,03	7,21	8,83	11,4	110
DC	6-46	4,20	5,61	6,63	7,93	9,71	12,5	50
DC	10-45	4,20	5,61	6,63	7,93	9,71	12,5	90
DC	7-46	5,34	7,13	8,44	10,1	12,4	16,0	55
DC	12-45	5,34	7,13	8,44	10,1	12,4	16,0	100
DC	14-45	5,72	7,64	9,04	10,8	13,2	17,1	105
DC	8-46	6,86	9,17	10,9	13,0	15,9	20,5	60
DC	10-46	9,53	12,7	15,1	18,0	22,1	28,5	65

HOLLOW CONE SPRAY

TYPE DC

Contact our Helpline for any special requirements:
Tel: +44 (0) 151 424 6821
Fax: +44 (0) 151 495 1043
e-mail: sales@delavan.co.uk
Web: www.delavan.co.uk

