

SPRAY CHARACTERISTICS

- Produces highly uniform flat spray at high pressures.
- Maximum impinging force is produced with a minimum loss of energy resulting in higher efficiency.
- Spray pattern has a knife-like cutting edge.
- Normal spray angles of 25° and 32°.
- Orifice is offset 15° to axis of dovetail.

CONSTRUCTION AND MATERIALS

- Dovetail connection nozzle/body for positive alignment.
- 3 piece design with Male BSPT thread or Welding Nipple body, available in:
- Stainless Steel bodies and cap.
- Mild Steel (Welding Nipple body only.)
- Longer welding nipple bodies available to special order.
- Nozzle is 416 Hardened Stainless Steel.
- Tips, bodies and cap can be ordered separately in different materials.
- Threaded bodies are 3/4" or 1" Male BSPT only.
- Other materials available to special order.



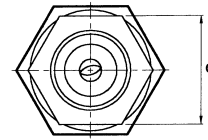
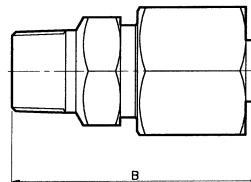
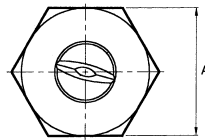
ORDER EXAMPLE

DD 20-32° Hardened Stainless Steel = Tip Only.
 3/4" DDM (Male) 40-25° Stainless Steel = Complete Assembly.
 DDW 60-32° Stainless Steel = Welding Assembly.

DIMENSIONS AND WEIGHTS

Assembly Type	Dimensions (mm)			Weight (g)
	A Hex	B	C Hex	
3/4" DDM	41,3	79,2	38,0	494
1" DDM	41,3	79,2	38,0	551
DDW	41,3	70,0	35,0 dia.	410

Nozzle Height (mm)	Coverage (mm) at 70 Bar.G.	
	25°	32°
200	125	150
225	135	165
250	155	180
275	165	190
300	180	205
325	185	220
350	195	235
400	220	250
450	240	285
500	255	300
550	270	315
600	280	320



Maximum Recommended Pressure: 275 Bar.G.

CAPACITY CHART

NOZZLE NUMBER	Equiv. Orifice Dia. (mm)	FLOW RATE IN LITRES/MIN AT Bar.G. - FOR BOTH 25° AND 32°														
		40	55	70	85	100	110	125	140	150	165	180	195	210	240	275
DD 6	1,5	8,7	10,2	11,5	12,6	13,7	14,4	15,3	16,2	16,8	17,6	18,4	19	20	21	23
DD 10	2,0	15	17	19	21	23	24	26	27	28	30	31	32	33	35	38
DD 12,5	2,2	18	21	24	26	29	30	32	34	35	37	38	40	41	44	47
DD 15	2,4	22	25	28	31	34	36	39	40	42	44	46	48	49	53	57
DD 20	2,8	29	34	38	42	45	48	51	54	56	59	61	64	66	71	76
DD 25	3,2	36	43	48	53	57	60	64	68	70	74	77	80	83	88	94
DD 30	3,6	43	51	57	63	68	72	78	81	84	88	92	95	99	106	113
DD 40	4,0	57	68	76	84	91	96	102	109	112	117	122	127	133	141	151
DD 50	4,4	72	85	95	105	114	119	127	135	140	147	153	159	166	177	189
DD 60	4,8	86	102	114	127	135	142	152	160	166	174	182	190	198	212	227

HIGH PRESSURE

TYPE DD

Contact our Helpline for any special requirements:
 Tel: +44 (0) 151 424 6821
 Fax: +44 (0) 151 495 1043
 e-mail:sales@delavan.co.uk
 Web:www.delavan.co.uk

